

MEMBRANES FILTER ELEMENT

**KMS TEKNOLOGI - FILTER ELEMENT
MODEL : SMW-800-400-H**

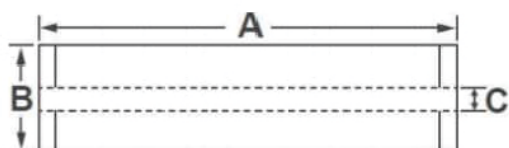


SMW series is an aromatic polyamide composite membrane element. It has the characteristics of low operating pressure, high water production and high desalination rate. It has a high removal rate for dissolved salts, TOC, SiO₂ and other substances, and is especially suitable for the preparation of high-purity water in the electronics and power industries. It is suitable for desalination treatment of surface water, municipal water and other water sources, mainly used in industrial pure water, boiler feed water or brackish water applications such as high-concentration brine.

Product Specifications

Active Membrane Area, ft ² (m ²)	Permeate flow rate, GPD (m ³ /d)	Stabilized Salt Rejection, %	Minimum Salt Rejection, %	Boron Rejection, %	Feed Spacer, mil
400 (37.2)	9,000 (34.1)	99.6	99.4	93	28

Test Conditions : 32,000 ppm NaCl, 5 ppm boron at 25°C (77°F), 800 psi (55 bar), pH 8, Recovery 8%.
Permeate flows for individual elements may vary +/-15%.



A, mm (in.)	B, mm (in.)	C, mm (in.)	Weight, kg (lbs.)
1,016 (40)	200 (7.9)	28.6 (1.125)	16 (35)

Operating Specifications

Max. Applied pressure	1,200 psi (82.7 bar)
Max. Chlorine concentration	< 0.1 ppm
Max. Operating temperature	45°C (113°F)
pH Range, Continuous (Cleaning)	2-11 (2-13)
Max. Feedwater turbidity	1.0 NTU
Max. Feedwater SDI (15 mins)	5.0
Max. Feed flow	75 gpm (17 m ³ /h)
Min. Ratio of concentrate to permeate flow for any element	5 : 1
Max. Pressure drop (ΔP) for each element	15 psi (1.0 bar)

Completed with :

1. COO from Manufacture KMS TEKNOLOGI
2. Warranty 1 to 1 replacement for manufacture defect from KMS TEKNOLOGI.



KMS TEKNOLOGI
www.kmsteknologi.com